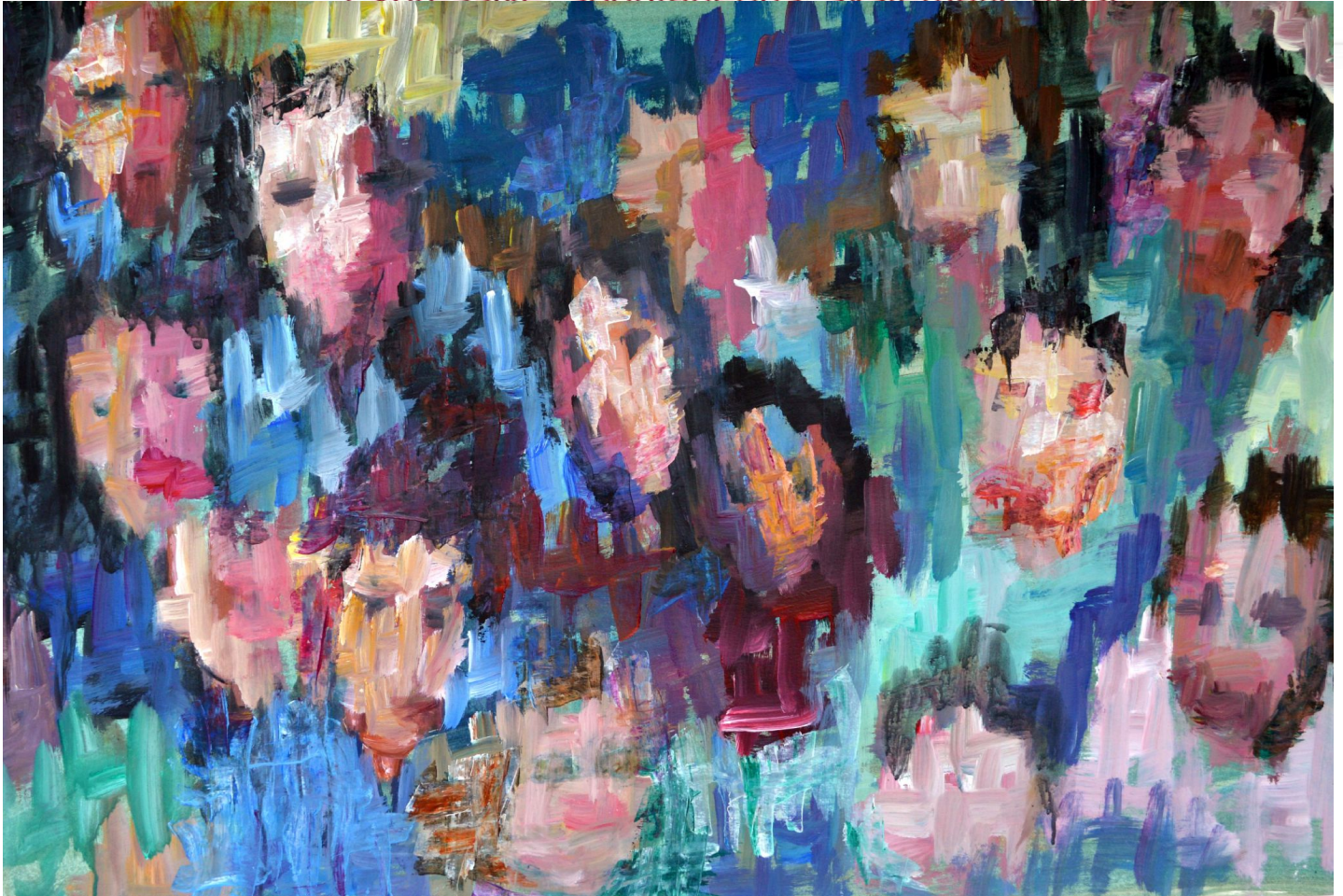




Gabriëlla Cleuren

Expressive spontaneous systematic artist



Gabriëlla Cleuren, *The faces of 2018 - Mass*, 2018

Highly pigmented acrylics on prepared Steinbach 250/300 g/mg paper, 73 x 110 cm (28 5/8 x 43 1/4 in.)

BNOW00568OW